

DPTExx2S / DPTExxx2

2-WIRE DIFFERENTIAL PRESSURE TRANSMITTERS, CURRENT OUTPUT

- Monitoring gaseous, non-aggressive media
- Piezo-resistive pressure transducer
- Up to 20 kPa (60 kPa) overload capacity
- Easy installation and wiring connection
- Measurement range adjustable by jumper
- Response time adjustable by jumper
- Re-zeroing possible by pushbutton



Technical Specification

Supply voltage	18...30 Vdc
Output signal	4...20 mA, two-wire
Response time	1 s (default) / 100 ms
Working temperature	0...50 °C
Storage temperature	-10... 70°C
Humidity	0...95% rh, non-condensing
Max. current consumption	< 21 mA
Linearity + hysteresis error	± ≤ 1.0% of FS
Long-term stability, typical	± ≤ 0.5% to 2.5% of FS p.a., depending upon meas. range
Repetition accuracy	± ≤ 0.2% of FS
Orientation dependence	± ≤ 0.02% of FS
Pressure medium	Air + non-aggressive gases
Process connection	6 mm hose pipe
Electrical connection	Screw terminal block for wire up to 1.5 mm ²
Fixation of device	With serrated screws
Housing material	ABS and PO
Cable entry	M20x1.5 (polyamide)
Protection class	IP54 (with hood), IP00 (without hood) as per EN60529
EMV	EN60770, EN61326
Weight	120 g

GENERAL

The differential pressure transmitters of the DPTEx series are used for measuring differential pressure, positive pressure, and vacuum. The transmitters are suitable for:

- air-conditioning,
- building automation,
- environmental protection,
- valve and flap control,
- filter and blower monitoring,
- fluid and level monitoring, and
- control of air flows.

NOTE:

These sensors are not suitable for use in installations under periodic inspection by the U.S. Food and Drug Administration.

Honeywell

Models

Order no.	Measuring Range		Overload Capacity	Burst Pressure
	1 (default)	2		
DPTE52S	-50...0...+50 Pa ¹⁾	NA	20 kPa	40 kPa
DPTE102S	-100...0...+100 Pa ¹⁾	NA	20 kPa	40 kPa
DPTE102	0...100 Pa ¹⁾	0...250 Pa ¹⁾	20 kPa	40 kPa
DPTE252	0...250 Pa ¹⁾	0...500 Pa ¹⁾	20 kPa	40 kPa
DPTE502	0...500 Pa ¹⁾	0...1 kPa ¹⁾	40 kPa	70 kPa
DPTE1002	0...1 kPa ²⁾	0...2.5 kPa ²⁾	40 kPa	70 kPa
DPTE5002	0...5 kPa ³⁾	0...10 kPa ³⁾	60 kPa	120 kPa

- 1) Temperature error at 0...50 °C $\pm \leq 5\%$ of FS
2) Temperature error at 0...50 °C $\pm \leq 2.5\%$ of FS
3) Temperature error at 0...50 °C $\pm \leq 1\%$ of FS

FUNKTION

DPTExx2S / DPTExxx2 Zweileiter Differenzdrucktransmitter sind mit einem integrierten piezoresistiven Druckaufnehmer ausgerüstet. Eine dünne Monosilikonschicht dient als Meßelement. Bei Druckbeaufschlagung wird diese ausgelenkt und generiert eine Meßspannung, welche verstärkt und temperaturkompensiert wird. Dieses Ausgangssignal wird entsprechend dem Meßbereich innerhalb der angegebenen Fehlergrenzen in ein standardisiertes 4...20 mA Analogsignal umgesetzt.

NOTE: The devices are factory pre-set to measuring range 1. This can be changed (except for +/- models) to measuring range 2 by removing the corresponding jumper (see Fig. 3).

NOTE: The devices are factory pre-set to a response time of 1 second. This can be changed to 100 ms by removing the corresponding jumper (see Fig. 3).

ACCESSORIES

DPSK: Included in delivery. Duct Kit, incl. 2 m of silicone hose and two joining pipes

DPSL: Ordered separately. L-shaped mounting brackets with screws.

WIRING

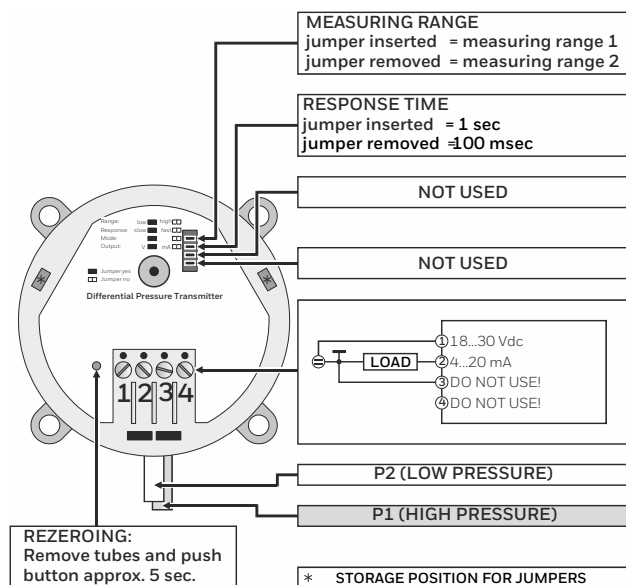


Fig. 3. Wiring details

DIMENSIONS

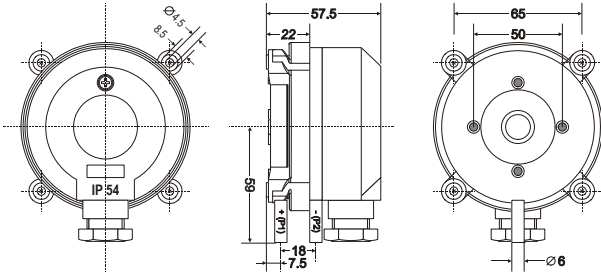


Fig. 1. Dimensions (in mm)

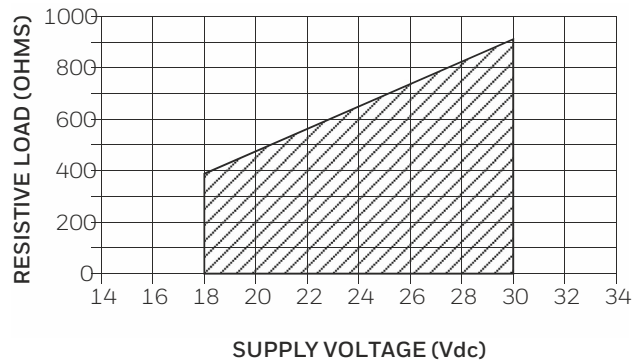


Fig. 4. Permissible load vs. supply voltage

MOUNTING

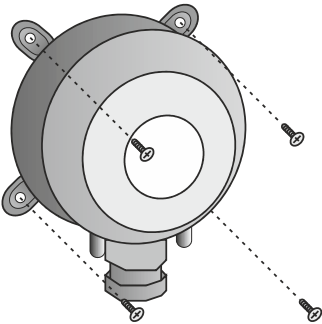



Fig. 2. Mounting

APPROVALS

- CE according to 2004/108/EC
-  (Eurasian Conformity)

For more information,
<https://honeywellbuildings.in>
 Call: 1-800-103-0339
 Email: HBT-Indiabuildings@honeywell.com

Honeywell HBT India Buildings
 Unitech Trade Center, 5th Floor, Sector-43,
 Block C, Sushant Lok Phase - I,
 Gurgaon - 122 002

www.honeywell.com

© 2020 Honeywell International Inc.

DPTExx2S / DPTExxx2
2-WIRE DIFFERENTIAL PRESSURE TRANSMITTERS,
CURRENT OUTPUT

Honeywell